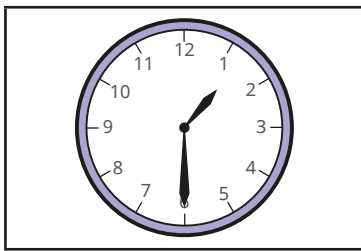
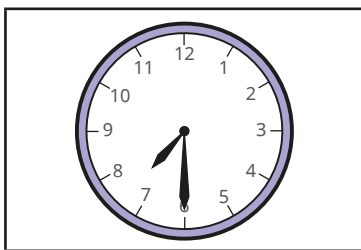


Tell the time to the half hour

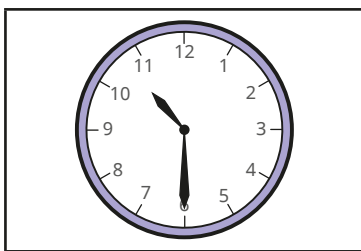
1 Match the clocks to the times.



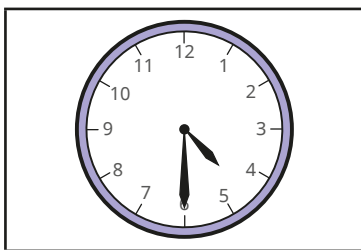
half past 7



half past 10



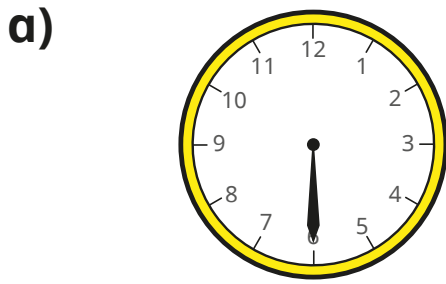
half past 1



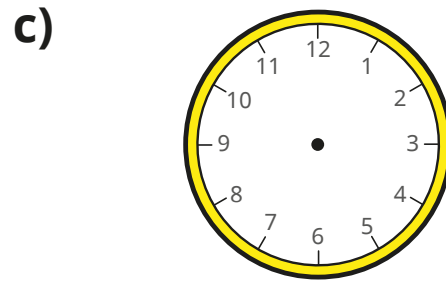
half past 4



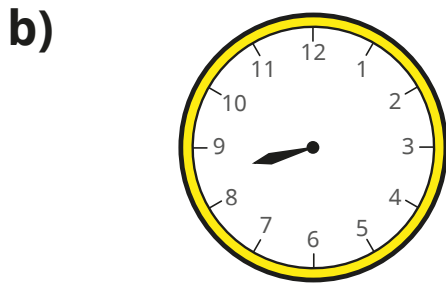
2 Draw hands on the clocks to show the times.



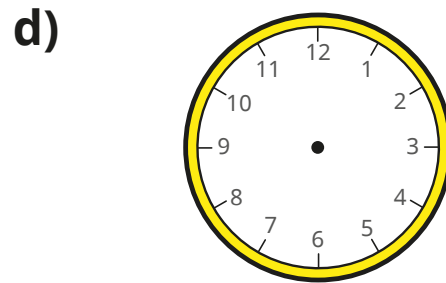
half past 9



half past 3

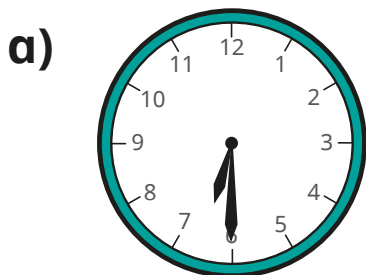


half past 8



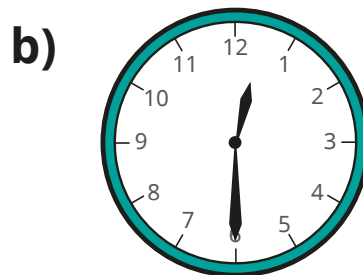
half past 11

3 Tick the time that matches each clock.



half past 7

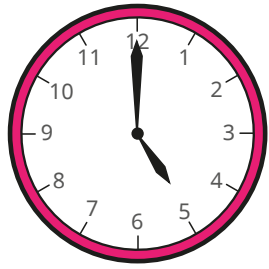
half past 6



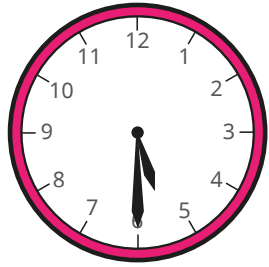
6 o'clock

half past 12

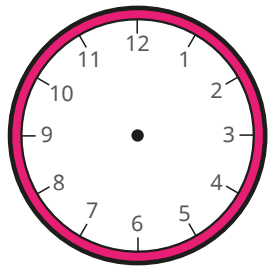
4 Complete the pattern.



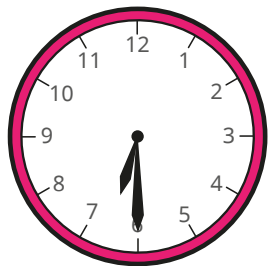
5 o'clock



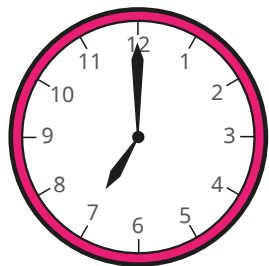
half past



6 o'clock



half past



o'clock

What time comes next?

