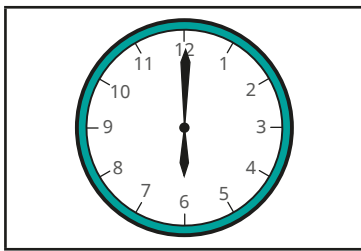
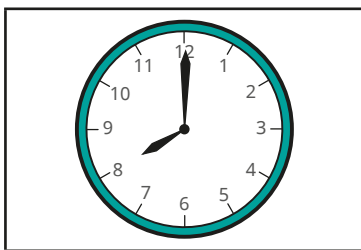


Tell the time to the hour

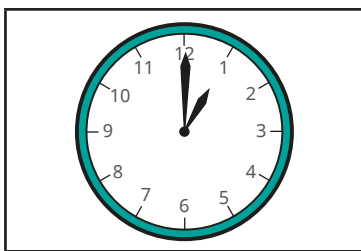
1 Match the clocks to the times.



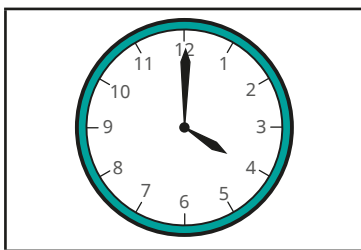
8 o'clock



6 o'clock

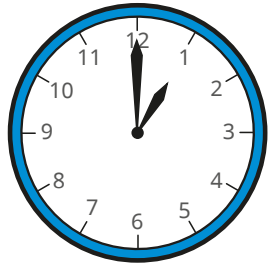


4 o'clock

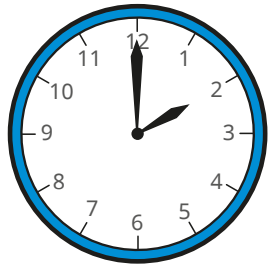


1 o'clock

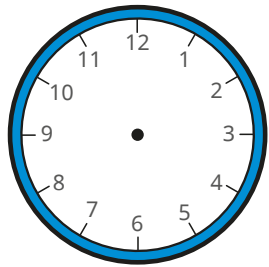
2 Complete the pattern.



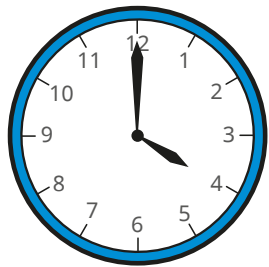
1 o'clock



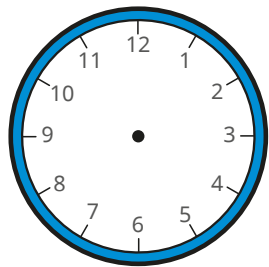
o'clock



3 o'clock



4 o'clock



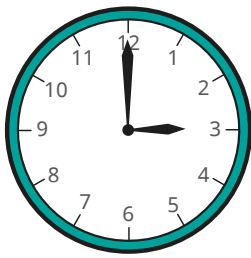
o'clock

What time comes next?



3 Tick the time that matches each clock.

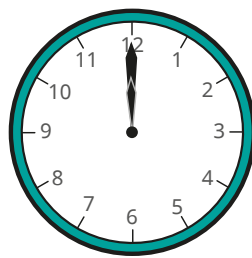
a)



3 o'clock

12 o'clock

b)

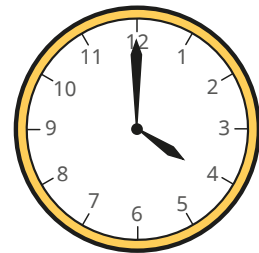
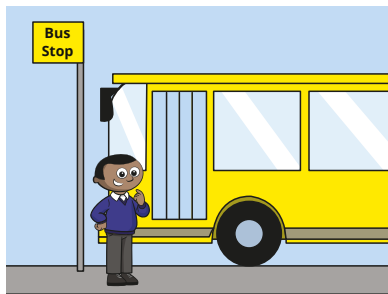
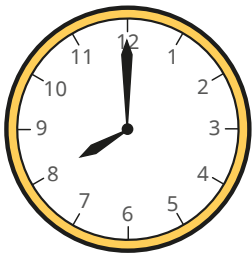


3 o'clock

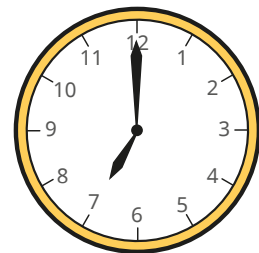
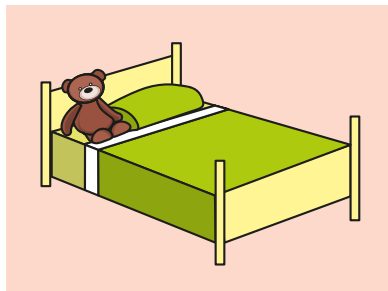
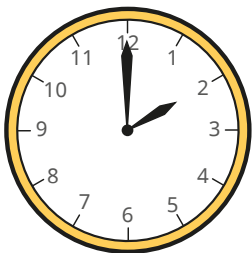
12 o'clock

4 Tick the time that is more likely.

a) Mo goes to school.



b) Mo goes to bed.



c) Mo has lunch.

