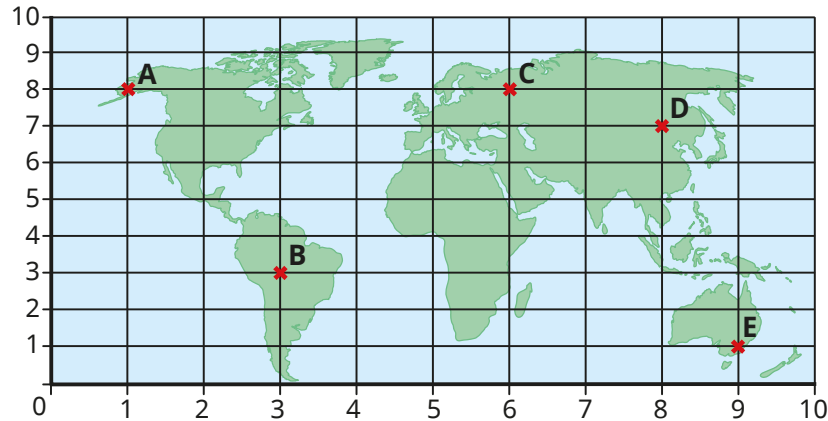


- 1** A map of the world is drawn on a grid.
Some locations are marked at points A to E.



Match the points to the coordinates.

A	B	C	D	E
(6, 8)	(1, 8)	(8, 7)	(9, 1)	(3, 3)

- 2** Use the words to complete the sentences.

horizontal
vertical
x
y

The first value in a pair of coordinates is the _____ value.

This is the value on the _____ axis.

The second value in a pair of coordinates is the _____ value.

This is the value on the _____ axis.

- 3** Some shapes are drawn on a grid.

- a)** Tommy, Dora and Eva are working out the coordinates of the pentagon.



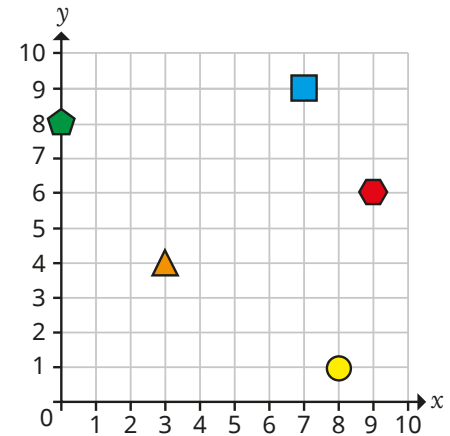
Dora

The coordinates of the pentagon are (0, 8).

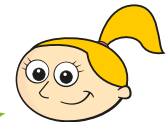


Tommy

The coordinates of the pentagon are (8, 0).



I think you are both right!



Eva

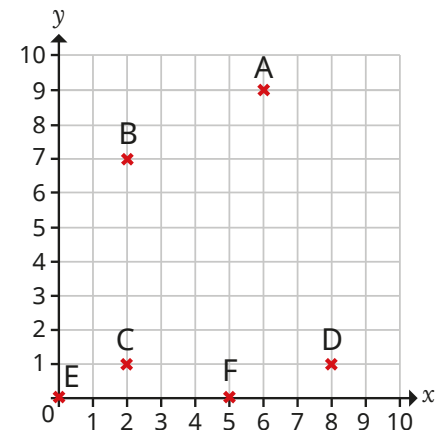
Who is correct?

Talk about it with a partner.

- b)** Write the coordinates of the other shapes.

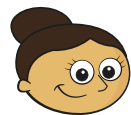
- 4** Six points are drawn on a grid.

- a)** Write the coordinates of each point.



3 Some shapes are drawn on a grid.

a) Tommy, Dora and Eva are working out the coordinates of the pentagon.



Dora

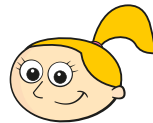
The coordinates of the pentagon are $(0, 8)$.



Tommy

The coordinates of the pentagon are $(8, 0)$.

I think you are both right!

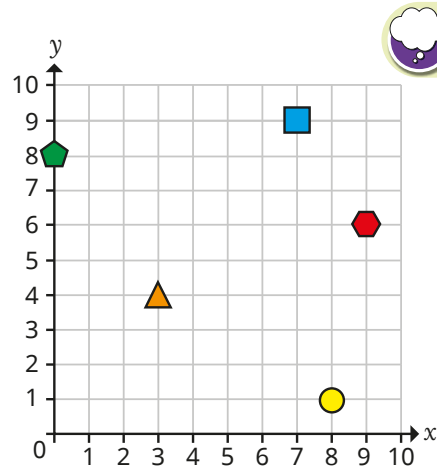


Eva

Who is correct?

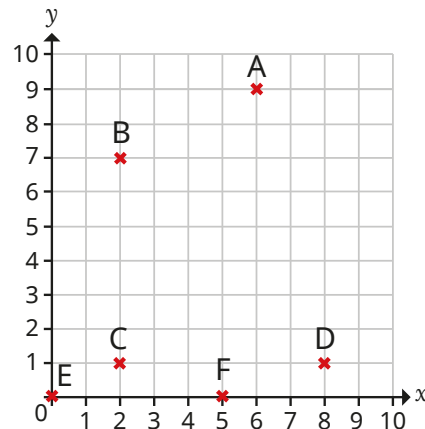
Talk about it with a partner.

b) Write the coordinates of the other shapes.



4 Six points are drawn on a grid.

a) Write the coordinates of each point.

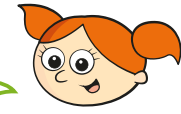


b) Teddy and Alex each choose one of the points that have been drawn.



Teddy

Our x -coordinates are the same.

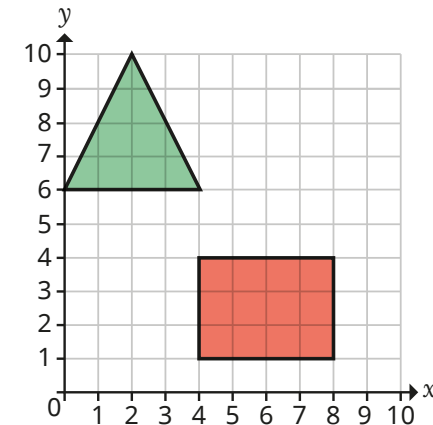


Alex

My y -coordinate is greater than Teddy's.

Write the coordinates of the points that Alex and Teddy have chosen.

5 Two shapes are drawn on a grid.



a) Write the coordinates of the vertices of the triangle.

b) Write the coordinates of two points inside the rectangle.

Compare answers with a partner.

c) Draw another shape on the grid.

Write the coordinates of your shape.