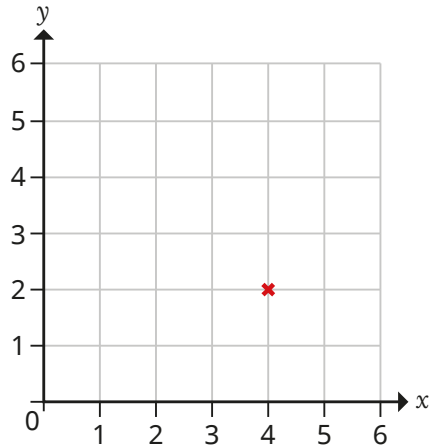


- 1 The point (4, 2) has been plotted on the grid.



- a) Use the words to help you complete the sentences.

up

along

The x -value is

This is how far _____ the x -axis the point is.

The y -value is

This is how far _____ the y -axis the point is.

- b) Plot the point (3, 1).
Label it A.
- c) Plot the point (1, 3).
Label it B.



- 2 Use a coordinate grid.

- a) The cards show the coordinates of six points.

A (4, 4)

B (2, 3)

C (6, 4)

D (10, 8)

E (8, 7)

F (7, 8)

Plot and label the points on the grid.

- b) Plot and label the points on the grid.

G (0, 5)

H (9, 0)

What do you notice about these points?

- 3 Here are the coordinates of three points.

X (1, 3)

Y (2, 5)

Z (3, 7)

- a) Plot and label the points on a coordinate grid.
- b) Join up the points.
What do you notice?
- c) Write the coordinates of two other points that fit this pattern.

Compare answers with a partner.



2 Use a coordinate grid.

a) The cards show the coordinates of six points.

A (4, 4)	B (2, 3)	C (6, 4)
D (10, 8)	E (8, 7)	F (7, 8)

Plot and label the points on the grid.

b) Plot and label the points on the grid.

G (0, 5)	H (9, 0)
----------	----------

What do you notice about these points?

3 Here are the coordinates of three points.

X (1, 3)	Y (2, 5)	Z (3, 7)
----------	----------	----------

a) Plot and label the points on a coordinate grid.

b) Join up the points.

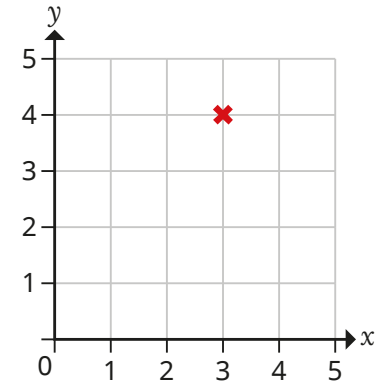
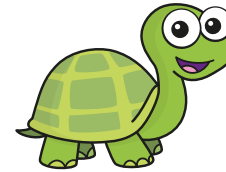
What do you notice?

c) Write the coordinates of two other points that fit this pattern.

Compare answers with a partner.



4 Tiny is plotting the point (4, 3).



a) What mistake has Tiny made?

b) Plot the correct position of (4, 3).

5 a) Plot the points (1, 1) and (1, 5) on a coordinate grid.

Join the points with a straight line.

b) Draw another line parallel to the first line.

What do you notice about the coordinates of points on this new line?

Compare answers with a partner.

